



## ENTERTAINMENT, TURNS IMMERSIVE

Brace yourself for a definitively immersive experience when you choose the EH-TW650. Stay away from conventional TV screens with larger-than-life projections of up to 762 cm.<sup>†</sup> 3LCD technology increases the colour brightness, three-fold, as compared to most projectors. **The perfect entertainment partner for everything from movies to gaming.**



EH-TW650



### Unmatched quality

Epson's innovative 3LCD technology delivers razor-sharp image quality and amazing colour consistency.

### Connectivity

The EH-TW650 is HDMI-enabled and features connection support for multiple devices ranging from smart devices to computers, TV tuners and video cameras.

### Split-screen mode

Project content from two sources on the same screen and at the same time.

<sup>†</sup>Source: Futuresource Consulting. <sup>†</sup>Diagonal screen size





### Split Screen

Split screen allows inputs from two separate sources to be displayed side by side on the same screen, for example - you can watch your favourite cooking YouTube video and also the recipes of the dish side by side at the same time.

### Availability of MHL Port

Watch your images and videos in your smart devices appear larger-than-life with the MHL port. Simply connect your MHL-compatible device with the MHL cable to fully enjoy your contents on the big screen. What's more, when connected, you can charge your Android smart device and operate it using the projector's remote control.



### Wireless Transmission

Enjoy smooth, smart wireless projection directly from Android and Apple iOS tablets and smartphones with the iProjection app. Simply connect the projector through direct Wi-Fi transmission. Install EasyMP Network Projection software to enjoy wireless projection from PC or laptop.



### PC-free Slideshow

Simply save pictures and movies on a USB memory device, insert into the projector and your pictures/movies are projected automatically. The viewer can see beautiful pictures/movies as they are for a more dramatic impression.



### Superior Placement Flexibility

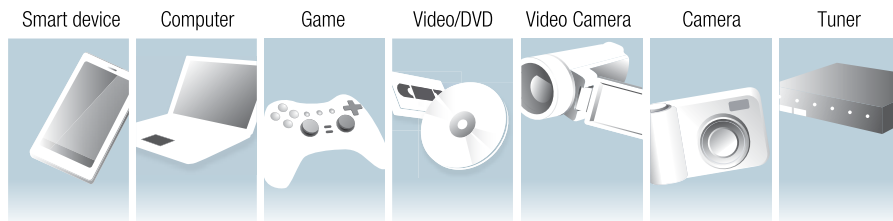
With the zoom lens and keystone adjustment features, you'll have a broader range of placement possibilities. Fewer placement limitations mean it'll be easier for you to relax while enjoying your favourite entertainment on the big screen.

\*181 cm - 219 cm for EH-TW650



### Wide-range Connectivity

With integrated support for multiple connection methods, including HDMI to suit a wide range of entertainment devices, this projector makes home entertainment more accessible than ever.



### Detail Enhancement

Heighten your gaming experience by bringing more clarity to dark scenes and enjoy your game the way it was made with detail enhancement. This mode improves the response speed for images\* projected at high-speed.



With lag time



Without lag time

\* Not applicable for 3D images.

### High Contrast Ratio

Epson Auto Iris Technology adjusts its aperture to provide optimum contrast and brightness for each scene. You'll be able to project beautiful well-defined images regardless of ambient light.



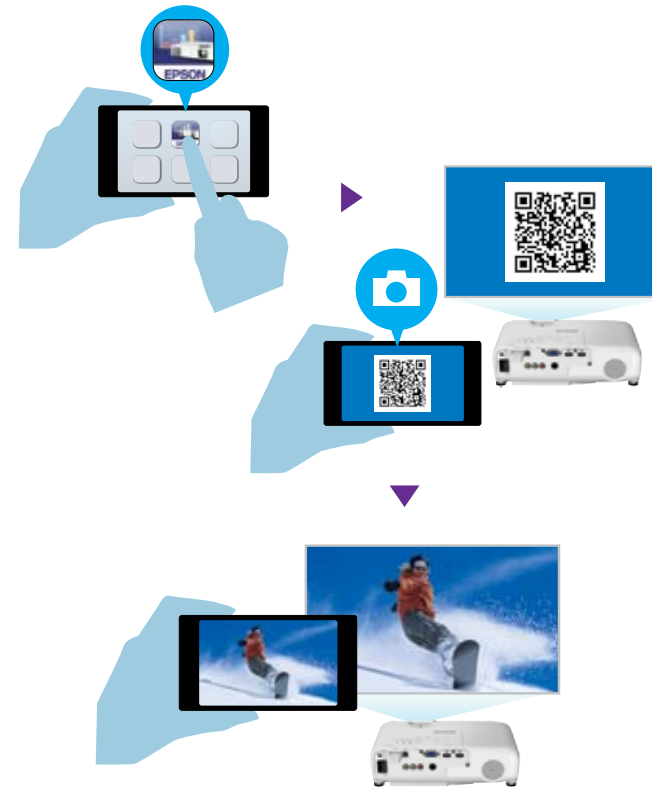
Lower contrast ratio



High contrast ratio

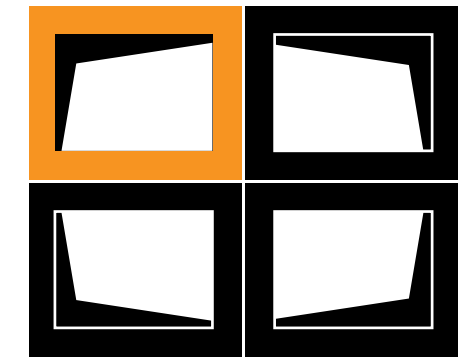
### QR Code Wireless Projection

With iProjection, the QR code displayed by the projector can be read by a smartphone to transmit the device information so you could be connected easily.

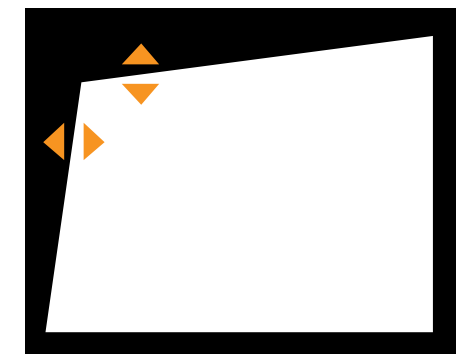


### Quick Corner

With the quick corner feature, you can use the keystone correction and lens shift function simultaneously for maximum projection without having to worry about unintentionally changing the aspect ratio.



Select where to correct



Use arrow keys to correct

### Horizontal Keystone Adjustment

Easily correct and eliminate distorted images with the intuitive one-touch horizontal keystone adjuster. Vertical distortion is detected by the projector itself and is corrected automatically. With a combination of adjustment features to correct image distortion, you'll be able to enjoy a broader range of placement options.



### Remote Control Function

In the iProjection app, your smart device can be used as a remote control. It also includes touch control operation for easier navigation of menus including the "Picture Quality Presets" which can be selected to suit a variety of room environments.



### Wide Variety of Colour Modes

Choose from a comprehensive range of colour modes, calibrated to suit your viewing environment and contents.

#### Dynamic Mode

Enjoy vivid image quality during the day without the need to dim the lights.



### Home Screen

A home screen image is displayed when the projector starts. The input source display is simple and easy to understand. This allows you to have convenient access to all the functions that you required.



#### Cinema Mode

Indulge in the authentic cinematic experience in the comfort of your home.





# SEE VIBRANT, REALISTIC COLOURS WITH HIGH COLOUR BRIGHTNESS.



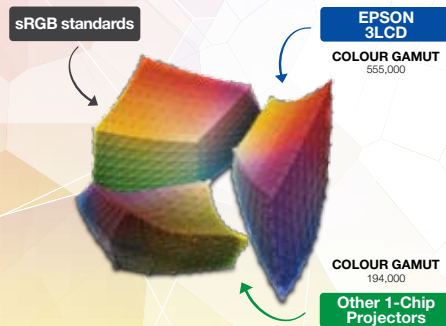
\*Leading Epson business and education projectors vs. leading 1-chip DLP projectors selected according to NPD. Data as of July 2012 based on U.S. research conducted by Pacifi Research.

See colours like never before. Epson 3LCD projectors deliver brilliant colours that match its white brightness to give you balanced, realistic and vibrant images. It's no wonder Epson projectors are the people's preferred choice.



## Up to 3X Wider Colour Gamut

Colour gamut refers to the range of colours that can be reproduced by a display device – the wider the gamut, the more realistic it is. Epson 3LCD projectors project three times wider gamut that matches closely to the original standard of a display device (sRGB), as compared to 1-chip projectors.

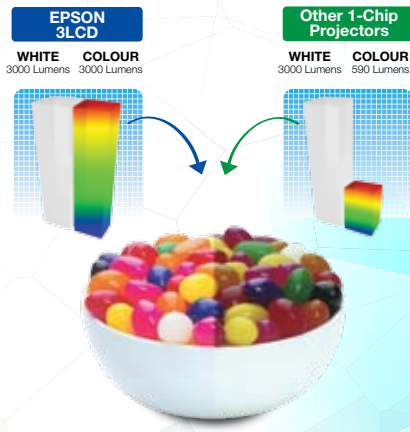


Comparing the yellow corners among the three gamuts, 1-chip projectors have a distinctly darker and smaller set of colours which are not as vibrant as Epson 3LCD projectors.



## Up to 3X Brighter Colours

Epson 3LCD projectors deliver up to three times the colour brightness, effortlessly creating the same colour and white brightness, resulting in faithful images with superior colour balance.



## No Rainbow Effect

With 1-chip projectors, the spinning motion of the sequential colour wheels tend to cause colours to break out into distinct red, green and blue. Called the rainbow effect, this may cause users to suffer headaches with prolonged viewing. Epson projectors do not give out this effect, giving users a comfortable experience.



# EPSON REVOLUTIONISES THE PROJECTOR MARKET WITH 3LCD TECHNOLOGY AND LEADS AS THE WORLD'S NO.1\* PROJECTOR BRAND FOR 16 CONSECUTIVE YEARS!

\* Based on independent research by Futuresource Consulting

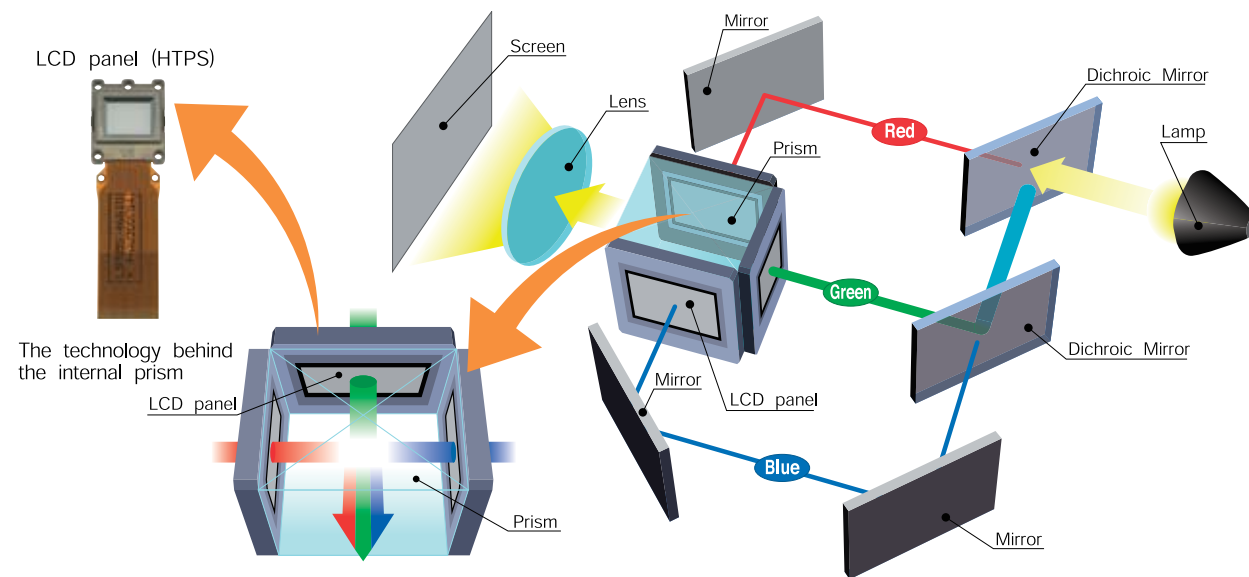
## Advantages of 3LCD Projection System

### Bright Images and Complete Colour Reproduction

3LCD projectors offer all-time colour (Red, Green and Blue) projection thereby ensuring complete full colour reproduction. This is suitable for projections of colour intensive images such as videos, photographs and colour charts.

### Incredible Details

3LCD projectors are able to produce an unparalleled range of grayscale images, which contributes to delivering incredible colour images that are smooth and seamless.



3LCD projector : RGB are projected at the same time, which makes the single composite image easy on the eyes.



\*\* HTPS (High Temperature Poly-Silicon) is an active matrix transmissive LCD. It is extremely small and produces high-quality images.

### Gentle on the Eyes

3LCD projectors' images do not suffer from colour break-up (commonly known as the rainbow effect). The projections are easy on the eyes as you will not be affected by any distorted pattern.

### Reliable Technology

With more than 70 million 3LCD chips shipped to date, the powerful and road-tested 3LCD projection technology is extremely reliable, and is known to deliver sharp and true-to-life images.

3LCD projectors use 3 separate LCD panels to form a continuous image containing all colours (red, blue and green) ensuring smooth video playback, even for rapid-motion images.



[www.epson.co.in/clo](http://www.epson.co.in/clo)

To learn more about 3LCD engines, visit

[www.3lcd.com](http://www.3lcd.com)

[www.3lcd.com](http://www.3lcd.com)



\*Compared against similarly-priced leading 1-chip DLP business and education projectors based on NPD data from July 2011 through June 2012 (available from www.npd.com). Colour brightness (colour light output) measured in accordance with IESNA 15.4. Actual colour brightness will vary depending on actual usage conditions. 3LCD is a registered trademark of Seiko Epson Corporation. DLP is a registered trademark of Texas Instruments, Inc. and its use here does not imply any affiliation with or endorsement by them.



# BIGGER PROJECTION. BRIGHTER FUTURE.

“More than half of the students are unable to read certain contents displayed on a 177.8 cm flat panel display.”

- Radius Research.



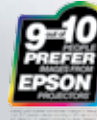
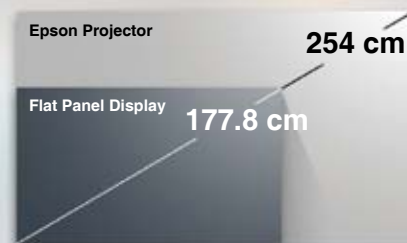
58% of students from US, 61% from UK, and 57% from Singapore are unable to read contents on a 177.8 cm flat panel display<sup>5</sup>. This is why we've built projectors that depict larger and more immersive pictures, so that you can fully engage your audience and maximise every learning experience with exquisite detail and vibrancy. By not downsizing classroom displays to flat panels—you ensure the brightest minds of our future are not hindered by contents displayed too small and unreadable.

Experience the real practical difference today.

To find out more, visit [www.epson.co.in/displaysizematters](http://www.epson.co.in/displaysizematters)

<sup>5</sup>Based on research conducted by Radius Research in US, UK and Singapore. The research was done using a 177.8 cm class 4K resolution flat panel in a 22' x 27' / 22' x 26' / 22' x 30' classroom-style arrangement respectively. When asked to copy down six short items of information from slides displayed, 58% of students from US, 61% from UK, and 57% from Singapore, aged 12-22, copied at least one item incorrectly.

<sup>6</sup>Source: FutureSource Consulting.



## GENUINE EPSON LABEL

To ensure the best quality and safety when using your Epson Projector, look for the "Genuine EPSON Colour Shifting Label" on your projector lamp. Real quality and value, only with Epson genuine supplies.

# PROTECT YOUR PROJECTOR. USE GENUINE LAMPS.



Don't compromise on safety – use Epson genuine lamps to avoid damaging your projector. Eliminate the risk of melting parts of your projector, as well as breaks that result in high-voltage shutdown. With a 0% failure rate even after 2,000 hours of usage – compared to 70% in non-genuine lamps – Epson genuine lamps are safer and more reliable. Choose the best possible viewing experience filled with long-lasting sharpness and colour in every projected image with Epson.

## DANGERS OF NON-GENUINE LAMPS



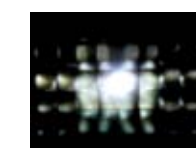
### UNRELIABLE

Counterfeit lamps deteriorate and break much faster than genuine ones.



### UNSAFE

Parts of your Epson projector such as the housing or wires may melt, disconnect, or become damaged when using non-genuine lamps.



### POOR IMAGE QUALITY

Counterfeit lamps may result in inaccurate colour projection, lower brightness levels, as well as flickering images that spoil your viewing experience.

[www.epson.co.in/projectorlamp](http://www.epson.co.in/projectorlamp)

<b>MODEL NUMBER</b>	<b>EH-TW650</b>
<b>Projection Technology</b>	RGB liquid crystal shutter projection system
<b>Specifications of Main Parts</b>	
<b>LCD</b>	1.55 cm wide panel (D10)
Size	1080p
Native Resolution	
<b>Projection Lens</b>	Optical Zoom (Manual) / Focus (Manual)
Type	1.58 - 1.70
F-Number	
Focal Length	18.2 - 29.2 mm
Zoom Ratio	1 - 1.2
Throw Ratio	1.02 - 1.23 (Wide - Tele)
<b>Lamp</b>	210W UHE
Type	4,500 hours / 7,500 hours
Life (Normal / Eco) <sup>1)</sup>	
<b>Screen Size (Projected Distance)</b>	
Zoom : Wide	67cm – 686cm (0.67-6.86m)
Zoom : Tele	81cm – 828cm (0.81-8.28m)
Standard Size	152.4 cm screen 1.35 - 1.64 m
<b>Brightness<sup>2)</sup></b>	
Colour Light Output (Normal)	3,100 lm
White Light Output (Normal / Eco)	3,100 lm / 1,925 lm
<b>Contrast Ratio</b>	15,000:1
<b>Internal Speaker(s)</b>	
Sound Output	2W Monaural
<b>Geometric Correction</b>	
Vertical / Horizontal Keystone	±30° / ±30°
Auto Keystone Correction	Yes (Vertical)
Horizontal Slide Keystone Correction	Yes
Quick Corner	Yes
<b>Lens Shift Range</b>	
Lens Shift	N/A
<b>Connectivity</b>	
<b>Analog Input</b>	D-Sub 15pin Composite S-video Component
	1 (Blue) 1 (Yellow) N/A N/A
<b>Digital Input</b>	HDMI
	2 (one of terminal supports MHL)
<b>Audio In</b>	
	2 RCA (White x 1, Red x 1)
<b>Audio Out</b>	
	N/A
<b>USB Interface</b>	USB Type A USB Type B
	1 (for USB Memory, USB Document Camera, Firmware Update) 1 (for USB Display, Mouse, K/B, Control, Firmware Update)
<b>Network</b>	Wireless
	Built-in
<b>Wireless Specifications (Wireless LAN)</b>	
Supported Speed For Each Mode	IEEE 802.11b: 11 Mbps <sup>3)</sup> IEEE 802.11g: 54 Mbps <sup>3)</sup> IEEE 802.11n: 130 Mbps <sup>3)</sup>
Supported Connection Mode	Infrastructure, Access Point
Wireless LAN Security	Quick: WPA2-PSK, Advanced: WPA/WPA2-PSK
<b>Wireless Specifications (Screen Mirroring)</b>	
Supported Speed For Each Mode	N/A
Supported Connection Mode	N/A
Supported Security Type	N/A
<b>Adjustment Functions</b>	
Frame Interpolation	N/A
Detail Enhancement	Yes
Split Screen	Yes
<b>3D Features</b>	
3D Display	N/A
2D - 3D Conversion	N/A
3D Format	N/A
3D Depth	N/A
<b>Operating Temperature</b>	5 - 35 °C <41 - 95 °F> ( 0m / 0ft - 2,286m / 7,500ft) 5 - 30 °C <41 - 86 °F> ( over 2,286m / 7,500ft) (20% - 80% humidity, No condensation)
<b>Operating Altitude</b>	0 - 3,000 m <0 - 9,843 ft> (over 1500m / 4,921ft: with high altitude mode)
<b>Direct Power On/Off</b>	Yes
<b>Start-Up Period</b>	about 6 seconds Warm-up period: 30 seconds
<b>Cool Down Period</b>	Instant Off
<b>Power Supply Voltage</b>	100 - 240 V AC ±10%, 50/60 Hz
<b>Power Consumption (220 - 240V)</b>	
Lamp On (Normal / Eco)	298W / 219W
Standby (Network On / Off)	2.0W / 0.2W
<b>Dimension Excluding Feet (D X W X H)</b>	249 x 302 x 87 mm
<b>Weight</b>	Approx. 2.7kg
<b>Fan Noise (Normal / Eco)</b>	37dB / 28dB
<b>Warranty</b>	2 Year for projector against standard manufacturing defects 1 Year or 1000 hrs on Lamp, whichever comes first

<sup>1)</sup> Lamp life will vary depending upon mode selected, environmental conditions and usage. Lamp brightness decreases over time.

<sup>2)</sup> Colour brightness (colour light output) and white brightness (white light output) will vary depending on usage conditions. Colour light output measured in accordance with IDMS 15:4; white light output measured in accordance with ISO 21118.

<sup>3)</sup> Maximum speed and range is achievable when used with same enhanced mode technology. Actual data rates, features and performance may vary depending on your computer system, the environment and other factors.

**Supplied Accessories**

Power Cable: 1.8m  
Remote Control: Yes, with Alkaline AA Battery x 2

**Optional Accessories**

Spare Lamp: ELPLP96  
Air Filter: ELPAF32  
Ceiling Mount (White Colour): ELPMB23  
Soft Carrying Case: ELPKS69

EH-TW650



©2018 Epson India Pvt. Ltd. All Rights Reserved. Reproduction in part or in whole, without the written permission from Epson, is strictly prohibited.

EPSON and EXCEED YOUR VISION are registered trademarks of Seiko Epson Corporation.

All other product names and other company names used herein are for identification purposes only and are the trademarks or registered trademarks of their respective owners.

Epson disclaims any and all rights in those marks. Projected images shown herein are simulations. The actual product design and contents may vary. Specifications are subject to change without notice and may vary between countries. Please check with local Epson offices for more information.

Apple, iPad and iPhone are trademarks of Apple Inc., registered in the U.S. and other countries. App Store is a service mark of Apple Inc.

Android is a trademark of Google Inc.

Information correct as of April 2018

**EPSON INDIA PVT. LTD.**

12th Floor, The Millenia, Tower A, No. 1,  
Murphy Road, Ulsoor, Bangalore - 560 008.  
Tel: 080-30515000 Fax: 080-30515005

**Regional Offices:**

Ahmedabad - 2640 7176/77, Chennai - 3967 7500, Cochin - 4012 315,  
Coimbatore - 98942 19200, Hyderabad - 6463 9640/41, Kolkata - 6500 9370/77,  
Mumbai - 3079 8200, New Delhi - 3312 0300/01, Pune - 3028 6000/05

Dealer's Stamp



**Epson Helpline:** For product info or service - 1800 425 0011  
For service - 1860 3000 1600 (9AM - 6PM) (Mon - Sat)

[www.epson.co.in](http://www.epson.co.in)